



MINI TOMBOLO (INDOOR + OUTDOOR)

design Piero Lissoni - ready made by Studio UN pizza

Armchair available for indoor and outdoor.

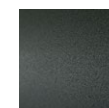
Indoor version: frame in tubular steel with chromed finish or with epoxy powder coating gunmetal grey color or in AISI 316 Stainless Steel matt satin-finish. Seat panel in in self- supporting decorative HPL plastic laminate padded in polyurethane foam. Seat cushion in differentiated density polyurethane foam, covered with acrylic fibre layers. Backrest cushion in preformed polyurethane foam covered with acrylic fibre layers. Fabric or leather upholstery, both fully removable by zippers.

Outdoor version: tubular steel frame in AISI 316 Stainless Steel with matt satin- finish or AISI 316 Stainless Steel with epoxy powder coating gunmetal grey colour. Seat panel in self- supporting decorative HPL plastic laminate. Seat and backrest cushions padded with open-cell structure polyurethane foam DRYFEEL S and covered with fibre for outdoor, coated with waterproof fabric protection. Upholstery with outdoor fabrics only, fully removable by zippers. Both version woven with a hypoallergenic, recyclable, eco-friendly tubular, suitable both for indoor and outdoor, in colours in collection. Seat depth: 38cm.

Structure



Steel with
Chromed-Plated
Finish
(Indoor)

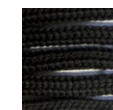


Steel with
Gunmetal Grey
Coating
(In-Outdoor)



Stainless Steel
with Matt
Satin Finish
(In-Outdoor)

Weaving



Black Tubular
(In-Outdoor)



Green Tubular
(In-Outdoor)



Greige Tubular
(In-Outdoor)

Technical Drawings

